

# Waterwatch

## 2018 Waterwatch Water Quality Site Summary Report

### Site Name and Description

ME\_YFM980 5 Mile Creek, Upstream of Moonee Ponds Creek Confluence, Essendon.

Monitors: 5 Mile Creek Waterwatch Group.

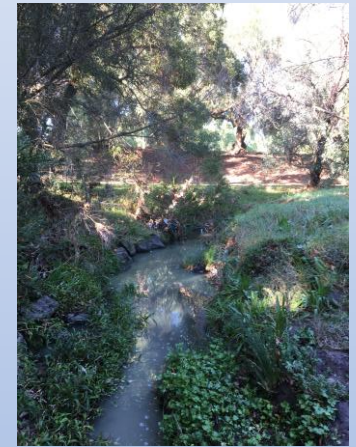
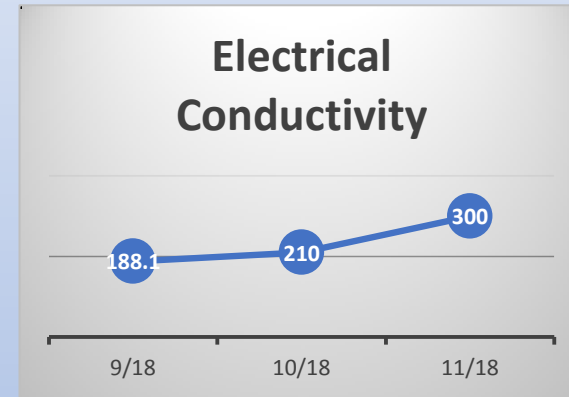
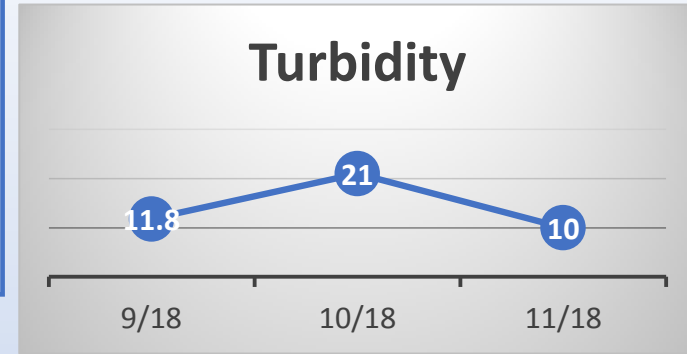
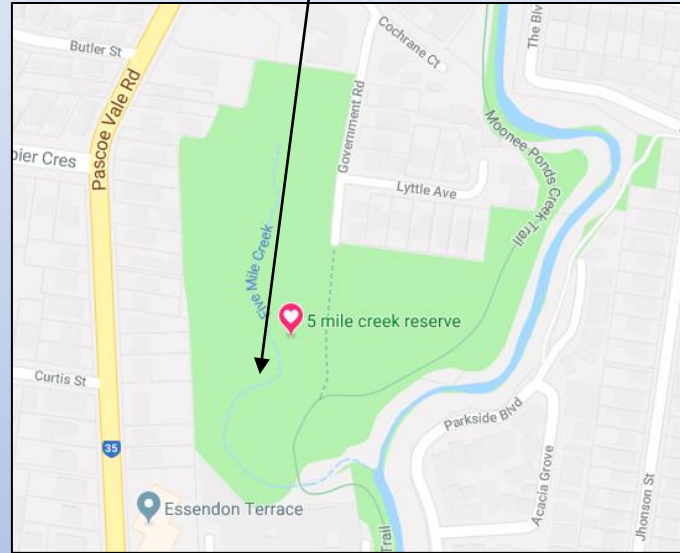
### Objectives:

- Track the health of the creek over time
- Quantify storm water impacts
- Gain understanding of local usage

### Monthly Parameters:

- Temperature
- Turbidity
- Dissolved Oxygen
- Reactive Phosphate
- Ammonium
- pH
- Electrical Conductivity

**Site Introduction:** 5 Mile creek is predominantly underground in storm water drains, coming to the surface as a short winding creek at 5 Mile Creek Reserve where it meets with Moonee Ponds Creek. Fed by the surrounding suburban area, including Woodlands Park wetland, the creek is an indicator of storm water usage by residents and businesses. To look at further water quality data for this site visit the [Waterwatch online database](#)



**Summary:** Over three sampling sessions in 2018 pH, phosphate, and oxygen levels were relatively stable and not indicative of severe degradation – surprising given this is a storm water drain.

In October we recorded a spike in turbidity (21 NTU), and electrical conductivity peaked at 300 uS/cm in November.